

# Installation of CFturbo<sup>®</sup> Software

## PLEASE NOTE:

- ⚠ Administrator rights are required for installation and licensing.
  - ⚠ CFturbo runs only on Windows XP/Vista/7.
  - ⚠ Microsoft<sup>®</sup> .Net Framework 3.5 is required for running CFturbo<sup>®</sup> 8.1.
- More information you can find on <http://www.microsoft.de/net> or download directly:  
<http://www.microsoft.com/downloads/details.aspx?familyid=AB99342F-5D1A-413D-8319-81DA479AB0D7>.

## ☒ Installation

### a) Installation from CD

Insert the CD in your CD drive.  
The setup launcher should start automatically – otherwise start **AutoRun.exe** manually (see right).

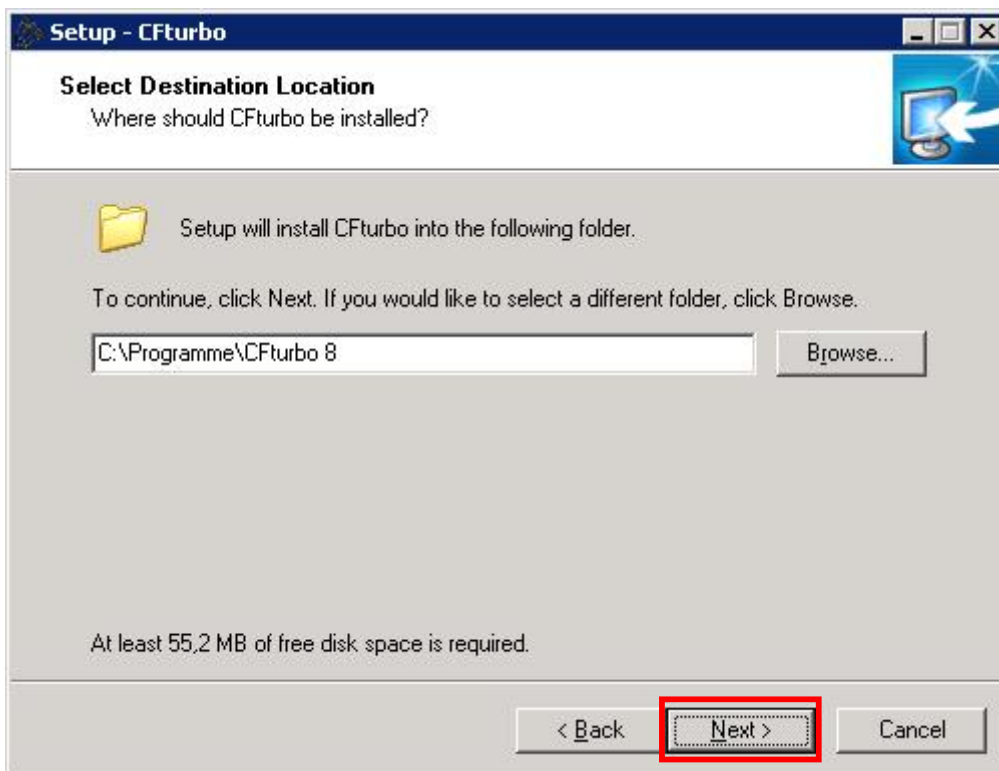
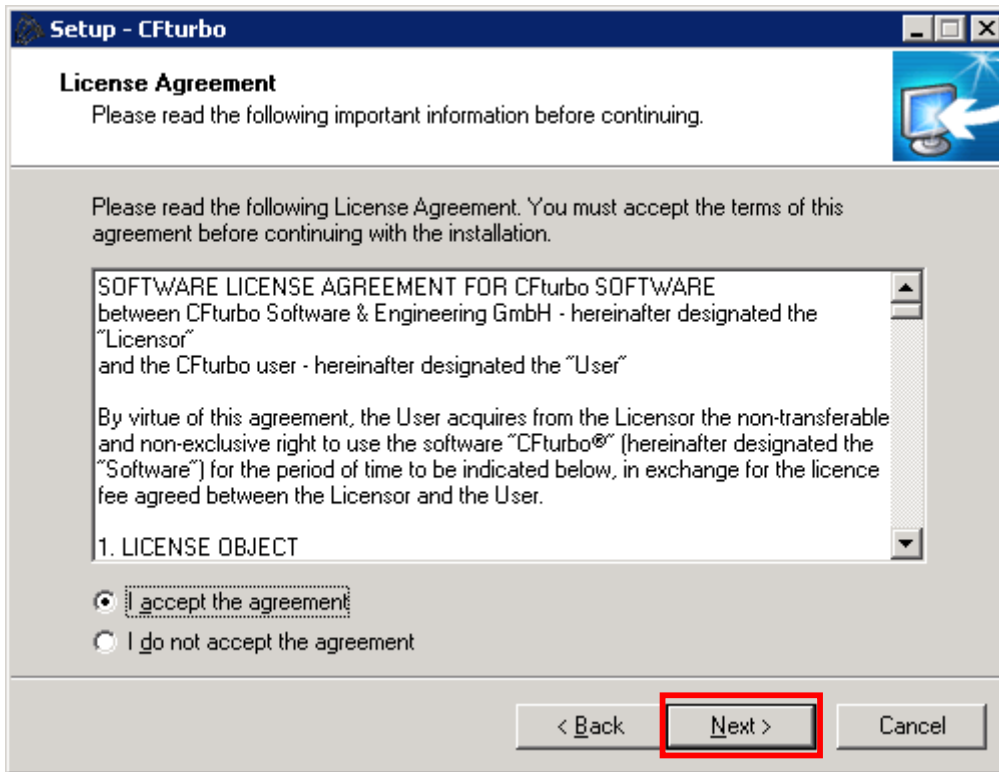
Select **CFturbo 8.1**.

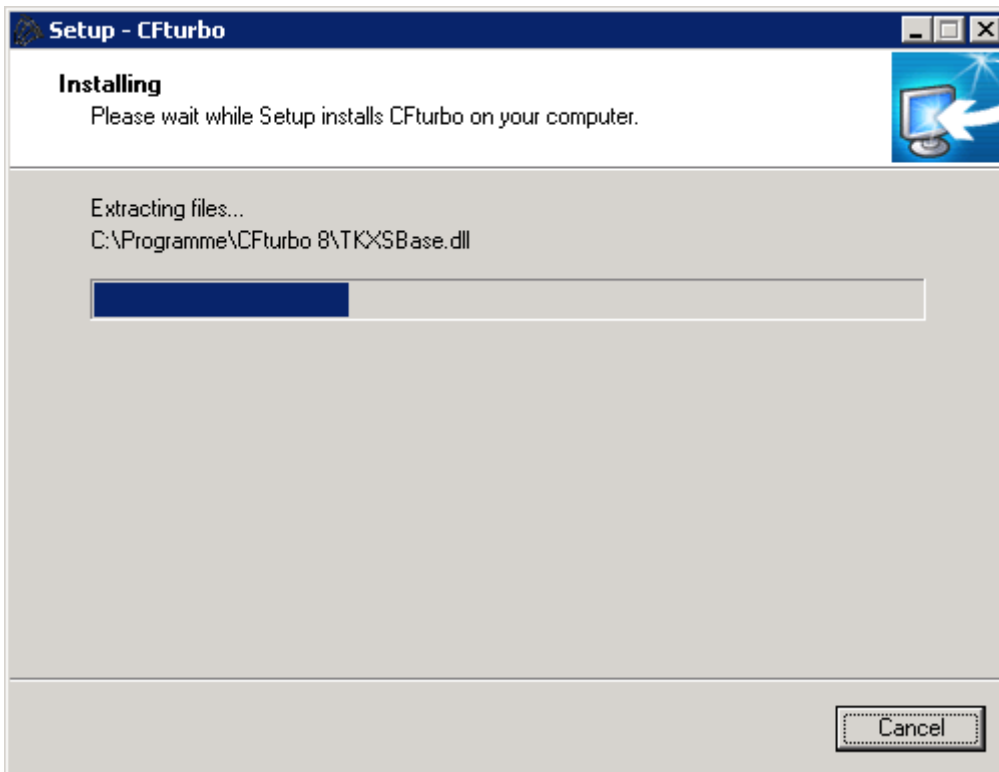
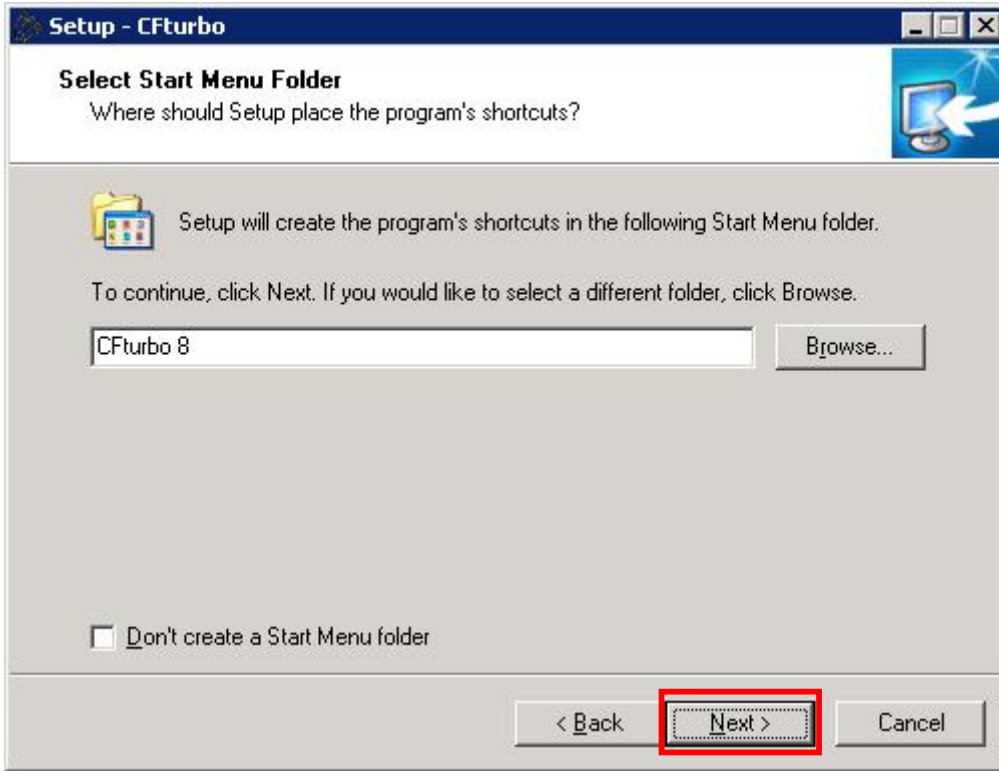


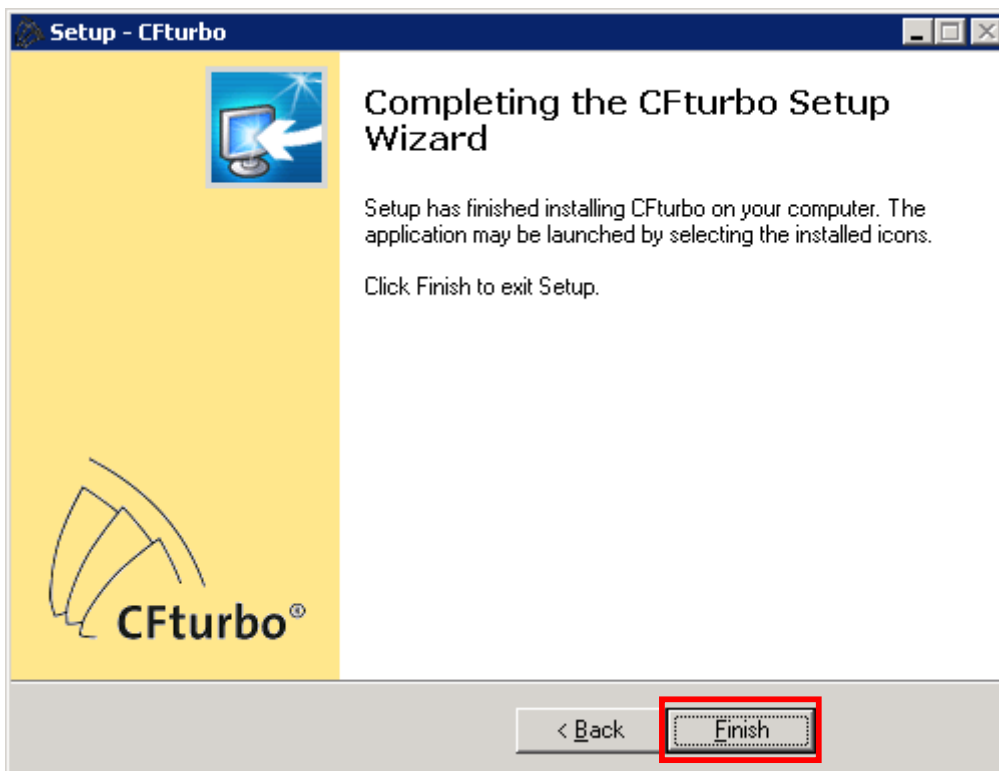
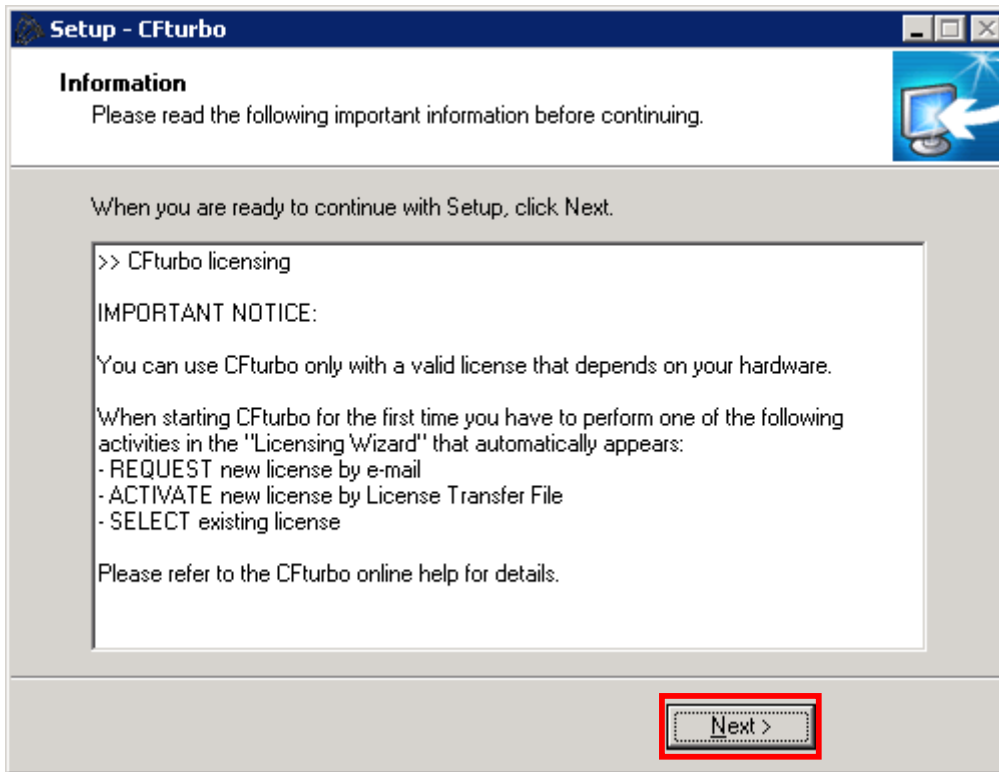
### b) Installation from download

Start the installation program **cfturbo8\*setup.exe**.









# • Licensing

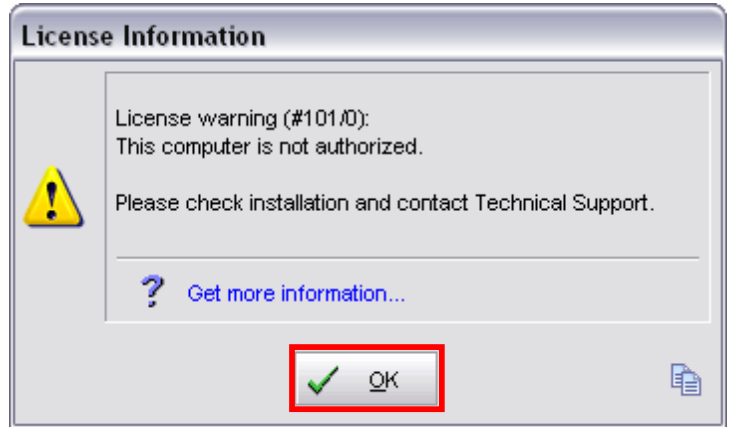
After successful installation of the software CFturbo® you have to perform the licensing. The following steps are required:

- **Start CFturbo®**

After starting CFturbo® you see a message indicating that there is no valid license available.

By clicking on the [Get more information](#) link you will open the online help page which will guide you through the whole licensing process.

After clicking <OK> the "License Wizard" dialog starts automatically (or open menu Edit | Licensing).



- **Use the CFturbo® License Wizard**

Initially the License Wizard is used to

- a) REQUEST a completely new license
- or to
- b) SELECT an already existing license.



**a) REQUEST new license**

If no valid CFturbo® license exists in your company you have to request a new license by E-mail from within CFturbo®.

See CFturbo® online help: [General/ Licensing/ Request license](#)

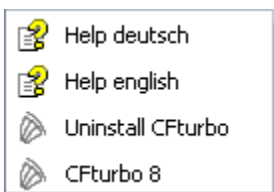
**OR**

**b) SELECT existing license**

If you have a running network license in your company you have to select the network license file only.



See CFturbo® online help: [General/ Licensing/ Select license](#)



All necessary licensing steps are described in detail in the CFturbo® online help (see start menu)

chapter [General/ Licensing](#).

